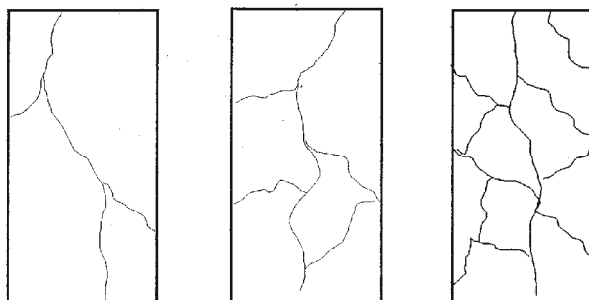


CRAZING

The effect of crazing is not uncommon to dense, strong wire-cut bricks especially if they have a smooth face finish. It is, however, far more noticeable on smooth blue types of brick.

The crazing is as a result of the stresses set up on the surface of the bricks when the material cools after the semi-vitrification that takes place during the high temperature firing.

Crazing or the effect of fire crazing is often referred to as fire-cracking or webbing and can be of a simple hairline crack or as a fine web-like pattern.



The crazing is undetectable to the eye whilst the bricks remain dry prior to use or whilst very wet. It is often superficial and will not detract from the overall performance. The fine hairline cracks, although unnoticeable during selection, are certainly a part of the character of the bricks. The changing weather conditions simply aggravate the crazing to a degree when they become most apparent, especially after saturation when the moisture may remain in the cracks for far longer periods of time.



The appearance of brickwork is not covered in BS EN 771-1 since it is not performance related. However, BSI have published PAS 70, A Publicly Available Specification which is intended to cover aspects of aesthetics.

The PAS includes the recommendations that all brickwork should be viewed from approximately 3 metres away, and deliveries of bricks should be compared to a reference panel agreed by all parties at the start of work, thought to be representative of current production and quality.

NHBC guidelines suggest 10m as a viewing distance, cracks should not be ‘significant’ and brickwork viewed as a whole and not on an individual basis.

For further information or advice regarding this topic please contact Ibstock’s Design & Technical Helpline on **0844 800 4576** or email technical@ibstock.co.uk

Although the instructions contained in this publication and any other information published by Ibstock Brick Ltd are believed to be accurate at the date of publication, they are strictly for guidance only and Ibstock Brick Ltd accepts no liability in relation to their use or for any losses, howsoever caused. You are responsible for taking all reasonable steps to ensure your use of the product conforms to all applicable health and safety requirements from time to time. If in doubt, please consult appropriately qualified persons. All products sold by Ibstock are sold subject to Ibstock’s Terms and Conditions of Sale, a copy of which is available on request.